

Success with MMS!



Multimedia Messaging Services are vital to the network operators younger and higher ARPU (Average Revenue Per User) customers. With its complex functional combination of SMS and GPRS, it is easy for the service to become unavailable in a complex mobile network that is always being upgraded or optimised.

In order to gain acceptance as a useful service and drive frequent use by the subscribers, errors should be avoided from the beginning, as once a service does not work, subscribers turn away from it. Therefore, to acquire a high reputation for Quality of Services (QoS), regular tests are essential.

Test your services proactively via the automated SITE MMS Test capability, and guarantee your subscribers a high standard of quality!

Keynote SIGOS offers you a fully automated MMS Test System!

Features

- ▶ Simulation of real subscriber behaviour via GSM/GPRS U_m, GSM A, GSM G_b, UMTS U_u, HSDPA, HSUPA, EDGE, CDMA2000, MM7
- ▶ Scalable architecture: from stand-alone system to widely distributed system
- ▶ Detailed test reports incl. WAP WTP/WSP decoding
- ▶ Central SIM Multiplexer: infinite number of SIM cards can be managed
- ▶ Resource allocation for different users or groups
- ▶ No MM storage limitations
- ▶ MM to legacy handset tests
- ▶ User definable test messages
- ▶ MO/MT transmission of multipart MMS
- ▶ Segmentation and reassembly supported
- ▶ Expandable library of MMS test messages
- ▶ Logging of all relevant timestamps

MMS Testcases

MMS_MO

Sending of an MMS message to any external numbers.

MMS_MT

Receiving MMS via corresponding WAP Page after SMS notification

MMS_MO_MT

Sending and receiving of an MMS (notification and download via WAP 1.x protocol stack)

MMS_MO_ToEmail_Retrieval Via Mobile

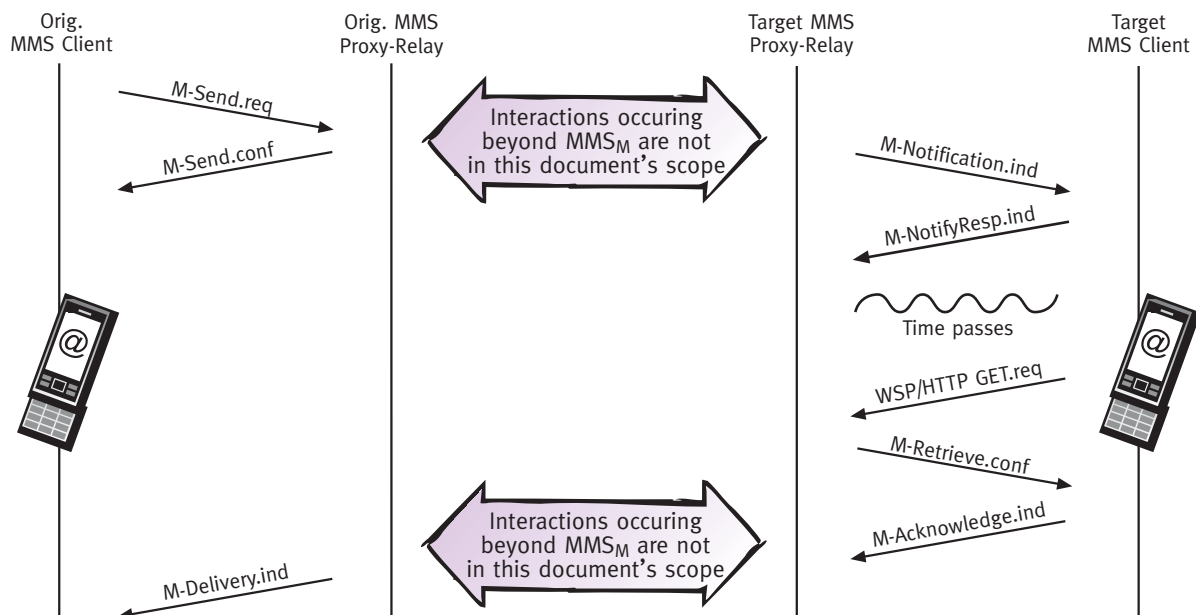
Sending of an MMS message to an e-mail address and fetching the corresponding e-mail message via POP3/IMAP

MMS_MO_ToLegacy

Sending of an MMS to a subscriber which has no MMS capabilities configured by the network operator

Others on Request

Example Testcase MMS_MO_MT



Available MMS KPIs:

- ▶ GPRS attach duration
- ▶ PDP context activation duration
- ▶ PDP setup connect duration
- ▶ PDP IP UP duration
- ▶ MMS send duration
- ▶ MMS fetch duration
- ▶ MMS push arrival to receive MMS duration
- ▶ MMS connection to send duration
- ▶ MMS send to push arrival duration
- ▶ MMS end-to-end duration

Examples

